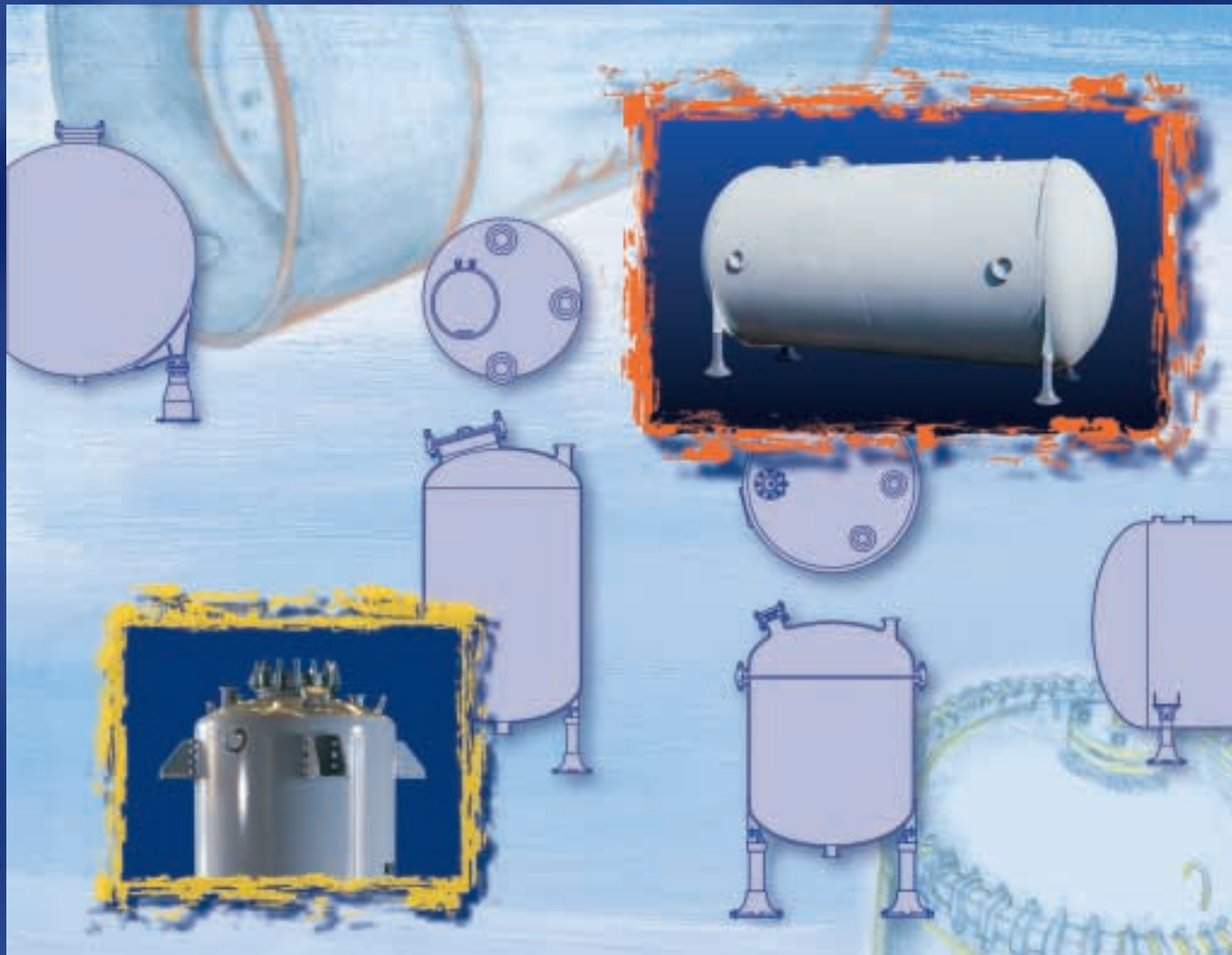




Chemstor™ Storage Tank



Pfautler Chemstor™ tanks and receivers are made of Glasteel®, a versatile material of construction which combines inert glass on the inside surface for complete product protection with steel outside for structural strength. Because of this Glasteel construction, these tanks:

- provide superior corrosion resistance
- do not affect the flavor, color or purity of stored products
- require minimal maintenance
- have a long service life.

Glasteel Chemstor tanks and receivers provide the many advantages of glass with the durability and strength of steel.

Handle Corrosive Products

Chemstor tanks and receivers are inspected with electric testers to assure complete glass coverage on the interior steel surface. This assurance permits the handling of virtually all acids and salts, organic or inorganic, anhydrous or aqueous, to temperatures of 250°F and sometimes higher. The only exceptions are the fluorides in any concentration.

Alkalies are also included in the permissible service environments. Operating temperatures can be as high as 180°F at pH 13. When the pH reaches 14, the maximum temperature is limited to 160°F.

Protect Neutral Products

Pfautler Glasteel is an inert material. There is no contamination of product purity. Color and taste are not affected. Sticky materials such as latex and resins do not readily cling to the fire-polished smooth surface.

Fast, Thorough Cleaning

Another advantage of the smooth glass surface is the ease with which it can be rinsed and cleaned. Very little time is required to thoroughly clean a tank. It is possible to sterilize the Glasteel surface.

Add Heat

Heat can be applied to the exterior surface for products that solidify at ambient temperatures. External heating panels are added in number and location as dictated by the characteristics of the user's product.

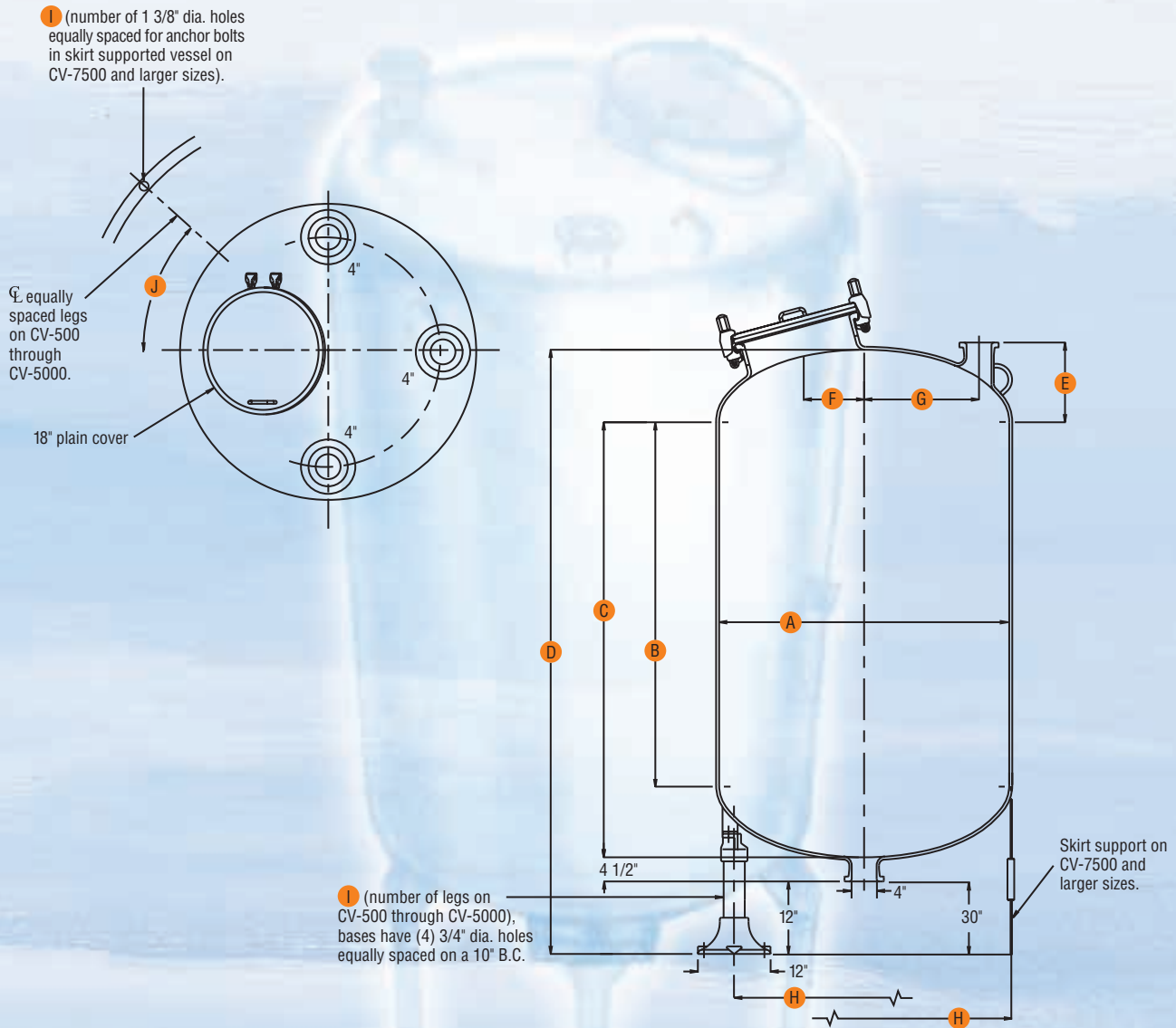
Many Sizes

Both horizontal and vertical designs are offered in a wide range of convenient standard size increments from 20 gallons through 24,000 gallons. Pfautler can provide other designs if these standard sizes do not meet your specific requirements.

Design Conditions

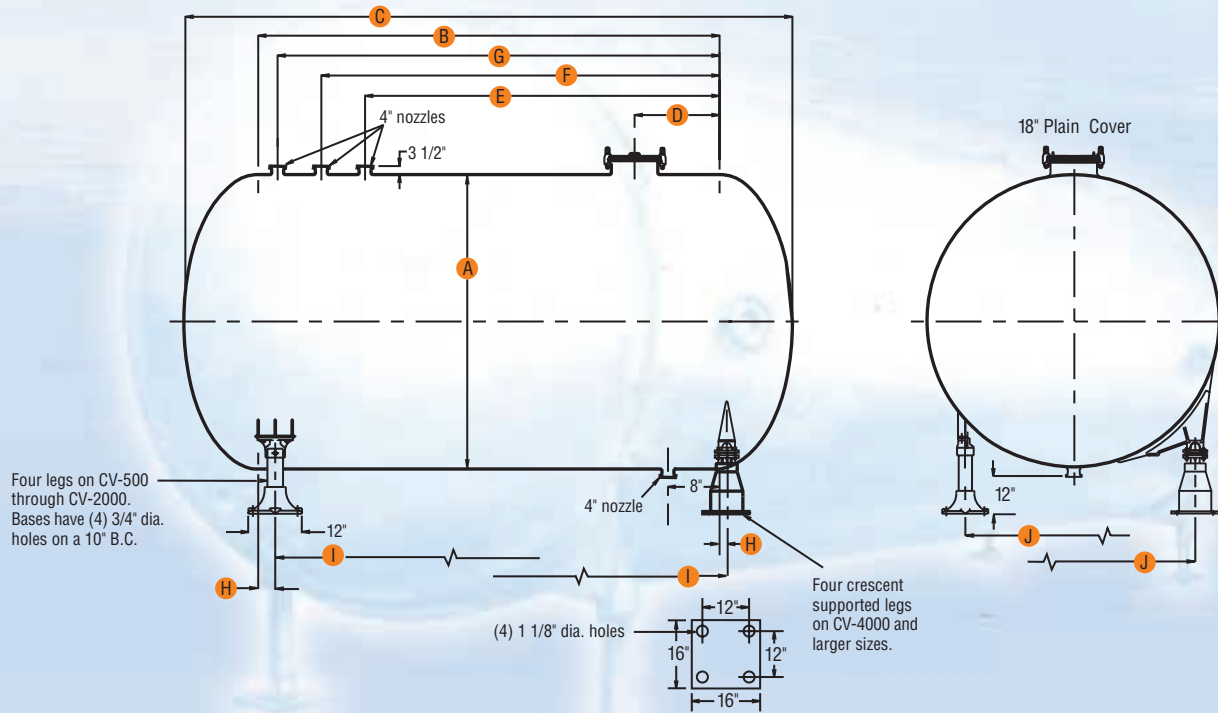
All vessels are designed, fabricated, inspected and stamped in accordance with Section VIII, Division 1 of the ASME Boiler and Pressure Vessel Code. All vessels are designed for a maximum specific gravity of 1.6, 110 m.p.h. wind load and seismic zone 2A (UBC).

CV Series



Model - Rated Capacity (gallons)	Full Capacity (gallons)	Dimensions (inches, unless otherwise indicated)										Design Pressure (psig)	Design Temp (°F)	Weight (lbs.)
		A (I.D.)	B (St. Side)	C	D	E	F	G	H	I	J			
CV-500	580	48	58	70	98½	13¾	10	19	43	4 ea	45°	50 psig or full vacuum	450	2,900
CV-1000	1126	60	72	87	118½	16	12	22	55	4 ea	45°	50 psig or full vacuum	450	4,100
CV-2000	2276	78	84	103½	139½	18¾	23	29	73	4 ea	45°	50 psig or full vacuum	450	6,300
CV-4000	4418	96	109	133	173½	22¾	33	35	91	6 ea	30°	50 psig or full vacuum	450	11,500
CV-5000	5624	102	125	150½	192½	23½	36	37	97	8 ea	22½°	50 psig or full vacuum	450	13,500
CV-7500	8666	120	137	167	231½	26¾	44	44	120¾	12 ea	30°	50 psig or full vacuum	350	21,730
CV-10,000	11,261	120	190	220	284½	26¾	44	44	120¾	12 ea	30°	50 psig or full vacuum	350	25,300
CV-15,000	15,580	132	219	252	319½	28¾	49	48	132¾	12 ea	30°	50 psig or full vacuum	350	35,700
CV-20,000	20,657	144	245	281	352	31	54	53	144¾	12 ea	30°	50 psig or full vacuum	350	48,400
CV-24,000	24,930	150	276	313½	386	32¾	57	55	150¾	12 ea	30°	50 psig or full vacuum	350	54,600

CH Series



Model - Rated Capacity (gallons)	Full Capacity (gallons)	Dimensions (inches, unless otherwise indicated)										Design Pressure (psig at 450°F)	Weight (lbs.)
		A (I.D.)	B (St. Side)	C	D	E	F	G	H	I	J		
CH-500	580	48	58	82	14	36	48	-	4	50	31	50 psig or full vacuum	2,900
CH-1000	1126	60	72	102	14	36	49	62	4	64	33 1/2	50 psig or full vacuum	4,100
CH-2000	2275	78	84	123	33	52	63	74	4	76	50	50 psig or full vacuum	6,300
CH-4000	4418	96	109	157	35	63	81	99	1	111	81	50 psig or full vacuum	12,900
CH-5000	5264	102	125	176	35	79	97	115	1	127	86	50 psig or full vacuum	14,700
CH-7500	8666	120	137	197	35	91	109	127	1	139	104	50 psig or full vacuum	20,130
CH-10,000	11,261	120	190	250	35	144	162	180	1	192	104	50 psig or full vacuum	23,700
CH-15,000	15,581	132	219	285	35	173	191	209	1	221	117 1/4	50 psig or full vacuum	33,700
CH-20,000	20,650	144	245	317	35	199	217	235	1	247	128	50 psig or full vacuum	45,200
CH-24,000	24,939	150	276	351	35	230	248	266	1	278	133	50 psig or full vacuum	51,100



Custom 1,000 gallon vertical CV Series



10,000 gallon horizontal CH Series



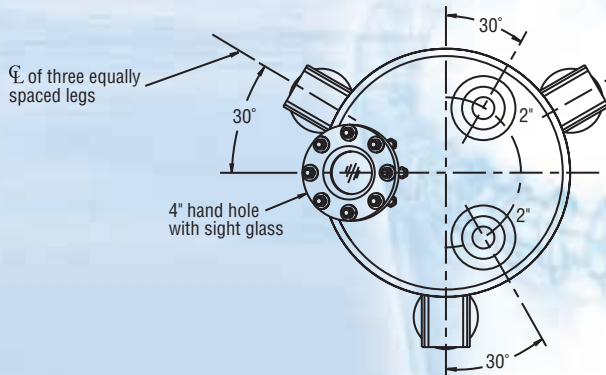
24,000 gallon vertical CV Series – skidded and ready for shipment



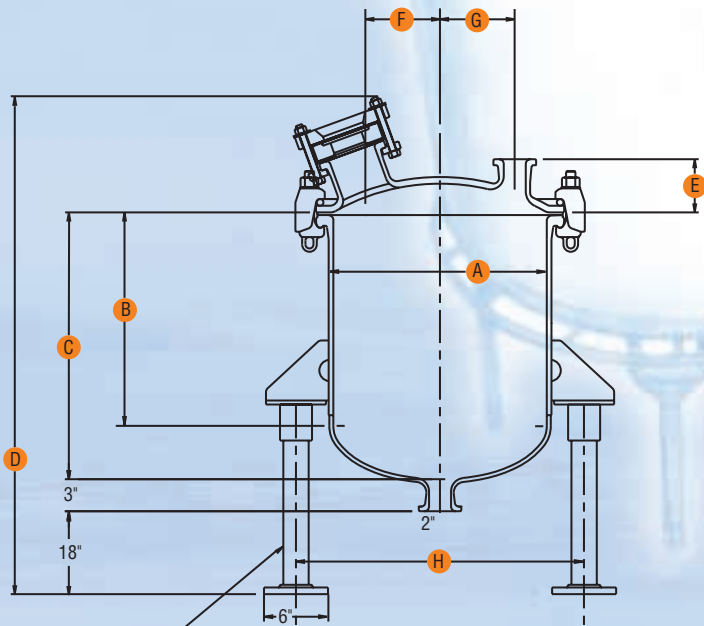
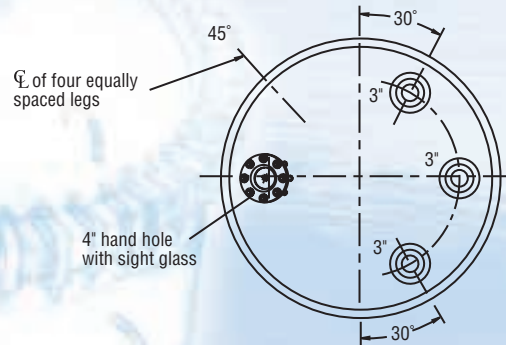
Custom 300 gallon VR Series

VR Series

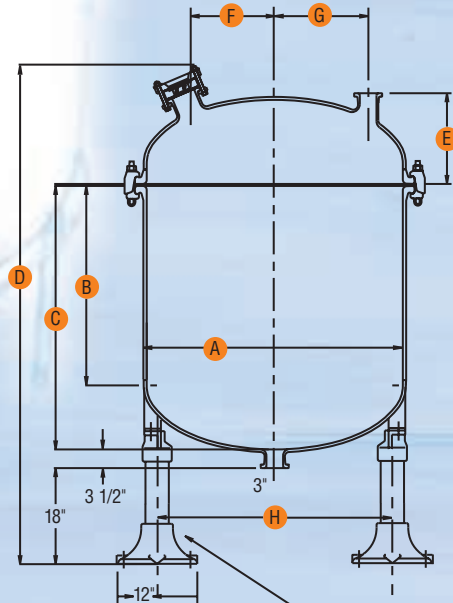
VR-20 through VR-50



VR-100 through VR-300



Three legs, bases have (4) 3/4" dia. holes on a 4 3/4" B.C.



Four legs, bases have (4) 3/4" dia. holes on a 10" B.C.

Model-Rated Capacity (gallons)	Full Capacity (gallons)	Dimensions (inches, unless otherwise indicated)								Design Pressure (psig at 450°F)	Weight (lbs.)
		A (I.D.)	B (St. Side)	C	D	E	F	G	H		
VR-20	23	20	13 ³ / ₄	18 ³ / ₄	51 ⁷ / ₁₆	5	5	7	27	150 psig or full vacuum	610
VR-30	32	20	19 ³ / ₄	24 ³ / ₄	57 ⁷ / ₁₆	5	5	7	27	150 psig or full vacuum	660
VR-50	52	24	22 ³ / ₄	28 ³ / ₄	61 ¹³ / ₁₆	5 ³ / ₄	7 ¹ / ₂	8 ¹ / ₂	31	150 psig or full vacuum	800
VR-100	136	32	28 ¹ / ₄	36 ¹ / ₄	77	13 ¹ / ₂	9 ⁵ / ₈	11 ¹ / ₄	26 ³ / ₄	150 psig or full vacuum	1,400
VR-200	266	40	35 ¹ / ₂	45 ¹ / ₂	88 ¹¹ / ₁₆	15 ³ / ₄	10 ¹ / ₂	14 ¹ / ₂	34 ³ / ₄	100 psig or full vacuum	2,100
VR-300	418	48	37 ³ / ₈	49 ³ / ₈	93 ¹ / ₂	17	15 ³ / ₄	17 ¹ / ₂	43	100 psig or full vacuum	2,750

SB12-200-3

Pfautler, Inc.
Rochester, New York

**Glasteel® Parts
and Services**
Rochester, New York

Pfautler S.A. de C.V.
Mexico City, Mexico

**Pfautler Equipamentos
Industriais Ltda.**
Taubate, SP, Brazil

Pfautler-Balfour Ltd.
Leven, Scotland

**Chemical Reactor
Services, Ltd.**
Bolton, England
Bilston, England

Pfautler-Werke GmbH
Schwetzingen, Germany

GMM Pfautler
Karamsad, India

**Suzhou Pfautler
Glass-Lined Equipment
Company Ltd.**
Suzhou, China

The information contained in this bulletin is believed to be reliable general guidelines for consideration of the products and services described herein. The information is general in nature and should not be considered applicable to any specific process or application. Pfautler, Inc. expressly disclaims in connection with the information contained herein any warranty, express, implied or statutory, including the warranty of fitness for a particular purpose and merchantability.

US Facilities

Pfautler, Inc.
Rochester, New York
Tel: (1 585) 235-1000
Fax: (1 585) 423-9644

**Glasteel® Parts
and Services**
Rochester, New York
Tel: (1 585) 235-1010
Fax: (1 585) 235-7923

Worldwide Facilities

**Chemical Reactor
Services Ltd.**
Bolton, England
Tel: (44 1204) 862-777
Fax: (44 1204) 577-484

Bilston, England
Tel: (44 1902) 353-637
Fax: (44 1902) 495-696

GMM Pfautler
Karamsad, India
Tel: (91 26) 9230367
Fax: (91 26) 9231935

Pfautler-Balfour Ltd.
Leven, Fife, Scotland
Tel: (44 1333) 423-020
Fax: (44 1333) 427-432

**Pfautler Equipamentos
Industriais Ltda.**
Taubate, SP, Brazil
Tel: (55 122) 326-244
Fax: (55 122) 217-562

Pfautler S.A. de C.V.
Mexico City, Mexico
Tel: (52 5) 355-0100
Fax: (52 5) 355-0809

Pfautler-Werke GmbH
Schwetzingen, Germany
Tel: (49 620) 2850
Fax: (49 620) 222412

**Suzhou Pfautler
Glass-Lined Equipment
Company Ltd.**
Suzhou, China
Tel: (86 512) 534 2608
Fax: (86 512) 534 0870



1000 West Avenue
PO Box 23600
Rochester, NY 14692-3600
Tel: 585 235 1000
Fax: 585 423 9644

Copyright ©
Pfautler, Inc. 2003
A Unit of Robbins & Myers, Inc.
All rights reserved

Glasteel® is a registered trademark
of Pfautler, Inc.