

VMX Mixer Drive



VMX MIXER DRIVE

KEY BENEFITS

Key Benefits:

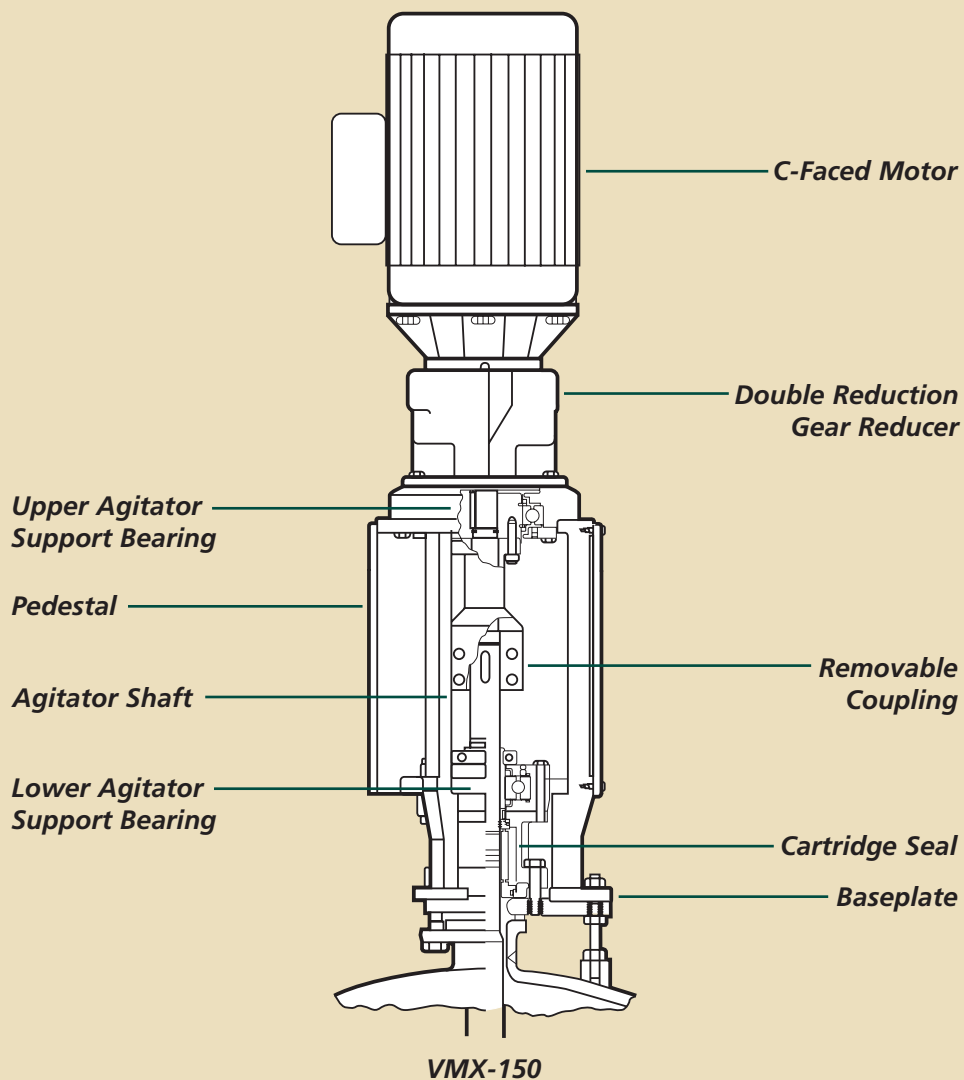
- In-line configuration
- Ease of maintenance
 - Simple seal changeout
 - Standard C-face motor
 - Cartridge bearings
- Wet or dry cartridge seal options
- Low maintenance gearbox
- All pedestal components plated (not painted)
- Clockwise or counterclockwise agitator rotation
- Standard, explosion-proof motor rated for variable frequency drives
- Pilot fit design - (VMX-150 only) (no shaft alignment required)



VMX IN-LINE MIXER DRIVE

The Pfaudler VMX Mixer Drive provides a versatile, compact, clean profile package and is supplied on reactors ranging in size from 20-750 gallons. It is suitable for upgrading existing glass-lined or alloy reactors, allowing them to benefit from the latest technological advances in seals, drives and agitators.

This space-saving design is composed of a C-faced motor, gearbox and agitator. The gearbox is supported directly from the top of the pedestal and the drive is then mounted to the reactor. This design clears up space on the top head and allows for easier access to the process nozzles.



EASY SEAL CHANGEOUT

The VMX-150 Mixer Drive is the only drive in the marketplace for small (20-100 gallons) glass-lined reactors that permits seal maintenance without removing the agitator from the reactor as a standard feature

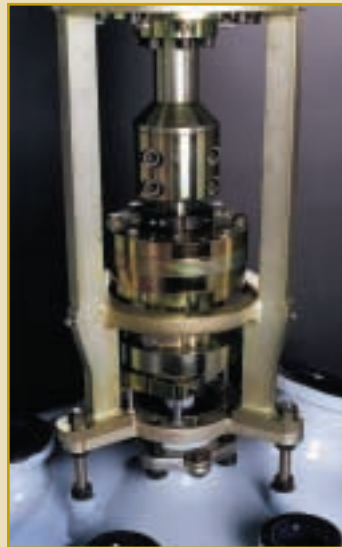
1

For safety, lock out the electric motor and depressurize seal lubricator or gas system. Remove shaft covers. Loosen the two-piece shaft collar. Remove the bearing assembly and seal housing bolts.



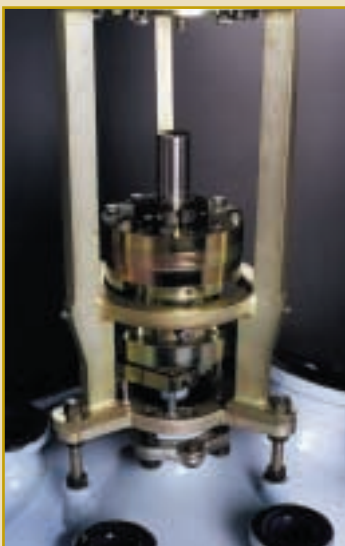
2

Raise the bearing assembly and cartridge seal. Install the maintenance clamp in the agitator shaft recess to hold the agitator safely in working position.



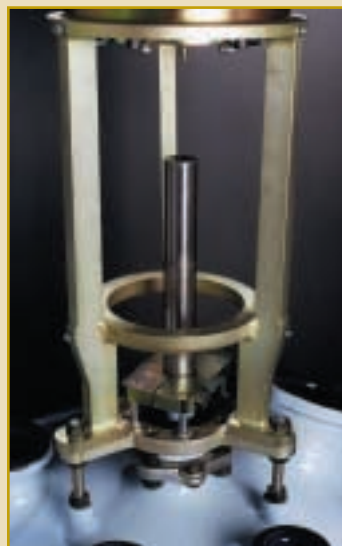
3

Remove the coupling from the top of the agitator shaft. Slide the bearing assembly up the shaft and remove.

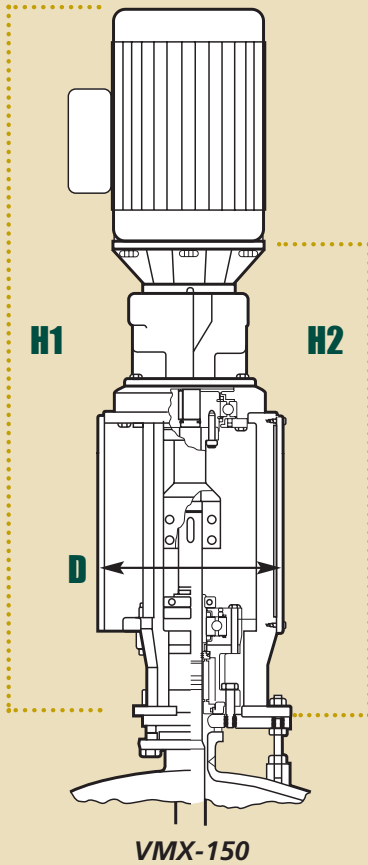


4

Slide the cartridge seal up the shaft and remove. Installing a pre-assembled and tested replacement cartridge seal assembly is simply the reverse of this procedure.



DRIVE DIMENSIONS



VMX-150

H1 = 43-1/2"

H2 = 29-1/4"

D = 11"

Shaft Diameter = 1-1/2"

Weight = 303 lbs.

VMX-250

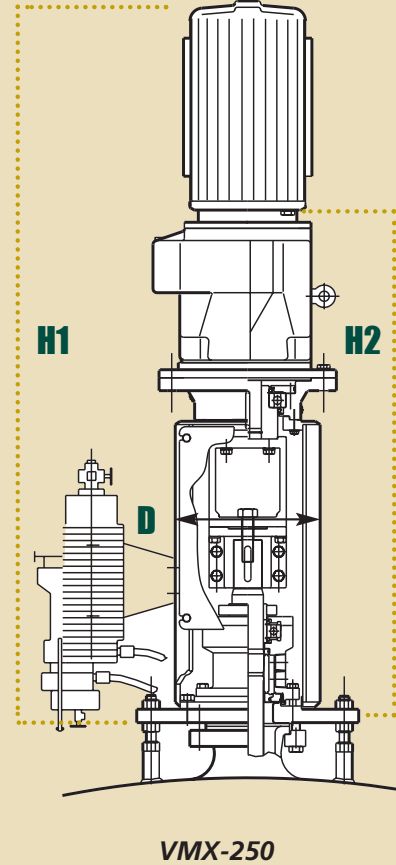
H1 = 56"

H2 = 39-1/2"

D = 17"

Shaft Diameter = 2-1/2"

Weight = 490 lbs.



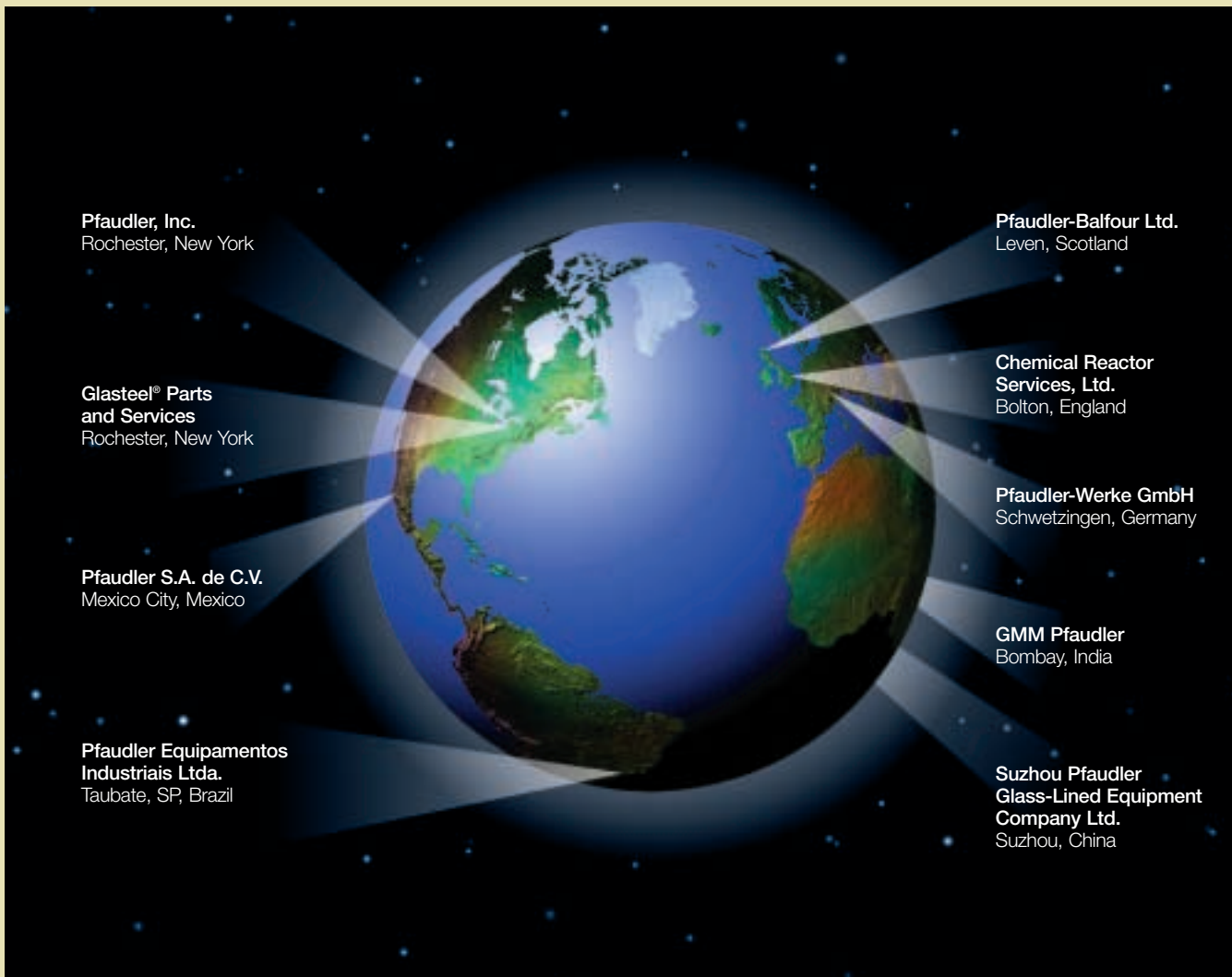
CARTRIDGE SEAL SYSTEMS



The VMX Mixer Drive features two cartridge seal system options, wet or dry. All cartridge seals feature the following:

- Preassembly and bench testing
- Non-metallic wetted components
- Glass-lined inboard seat retainers
- Double seal configuration
- Kalrez inboard elastomers (process side)
- Standard Pfaudler convection lubricator for wet seals
- Plated seal housings for corrosion resistance

SB22-100-2



The information contained in this bulletin is believed to be reliable general guidelines for consideration of the products and services described herein. The information is general in nature and should not be considered applicable to any specific process or application. Pfaudler, Inc. expressly disclaims in connection with the information contained herein any warranty, express, implied or statutory, including the warranty of fitness for a particular purpose and merchantability.

US Facilities

Pfaudler, Inc.
Rochester, New York
Tel: (1 585) 235-1000
Fax: (1 585) 235-6393

Glasteel® Parts and Services
Rochester, New York
Tel: (1 585) 235-1010
Fax: (1 585) 235-7923

Worldwide Facilities

Chemical Reactor Services Ltd.
Bolton, England
Tel: (44 1204) 862-777
Fax: (44 1204) 577-484

GMM Pfaudler
Bombay, India
Tel: (91 22) 2047470
Fax: (91 22) 2049408

Pfaudler-Balfour Ltd.
Leven, Fife, Scotland
Tel: (44 1333) 423-020
Fax: (44 1333) 427-432

Pfaudler Equipamentos Industriais Ltda.
Taubate, SP, Brazil
Tel: (55 122) 326-244
Fax: (55 122) 217-562

Pfaudler S.A. de C.V.
Mexico City, Mexico
Tel: (52 5) 55 355 0100
Fax: (52 5) 55 355 0809

Pfaudler-Werke GmbH
Schwetzingen, Germany
Tel: (49 620) 2850
Fax: (49 620) 222412

Suzhou Pfaudler Glass-Lined Equipment Company Ltd.
Suzhou, China
Tel: (86 512) 534 1622
Fax: (86 512) 534 0870



Pfaudler
REACTOR SYSTEMS

1000 West Avenue
PO Box 23600
Rochester, NY 14692-3600
Tel: 585 235 1000
Fax: 585 235 6393
www.pfaudler.com

Copyright ©
Pfaudler, Inc. 2004
A Unit of Robbins & Myers, Inc.
All rights reserved

Glasteel® and Cryo-Lock® are registered trademarks of Pfaudler, Inc.