

GREEN BOILER TECHNOLOGIES

A2000 SERIES WATER BOILERS

TYPICAL SPECIFICATION

Water Boiler shall be Green Boiler Technologies, model number _____ having an input rating of _____ BTU/HR, and _____ BTU/HR output, and shall be operated on natural or propane gas.

The heat exchanger waterway will be non-ferrous, helically wound in an hourglass continuous coil. The water containing sections shall be of 1 ¼" I.D. copper-fin tube construction having extruded integral fins spaced 7 fins per inch. The tubes shall be brazed to an all bronze inlet/outlet. The heat exchanger shall be built in accordance with ASME Section IV, designed for a working pressure of 160 PSIG and bear the "H" stamp. The entire heat exchanger shall carry a limited 10-year warranty, and a lifetime warranty against the effects of thermal shock.

The atmospheric burner shall be constructed of cast iron with multiple bronze orifice jets combined to form one "Turbulated Combustion Efficient Flame." The burner shall operate on natural or propane gas. The unit shall include a gas pressure regulator and Standard, 2-Stage, or CSD-1 gas train.

The entire unit will be factory assembled with stainless steel exterior jacketing, wired and factory fire tested. Water boiler shall be furnished with IID (intermittent pilot burner ignition system) with 90 second or less shut-off response to pilot failure. CSD-1 water boilers shall be furnished with IID (intermittent pilot burner ignition system) with 15 second or less shut-off response to pilot failure. Water boiler shall be equipped with a manual reset high limit aquastat.

Water boiler shall be third party certified and approved as a Category I appliance using type B vent material.

GREEN BOILER TECHNOLOGIES

A2000 SERIES WATER BOILERS

SUBMITTAL

JOB NAME _____

LOCATION _____

ARCH./ENGR. _____

WHOLESALE/REP. _____

MECH. CONTRACTOR _____

TAG: _____

MODEL NO. _____ BTU INPUT _____ BTU OUTPUT _____ TYPE GAS _____

OPTIONAL EQUIPMENT _____

STANDARD EQUIPMENT

Hourglass copper fin tube heat exchanger
Electronic spark ignition
24-volt control system
Cast iron burner w/ bronze orifices
ASME 125# pressure relief valve
Manually operated gas cock
Manual reset high limit aquastat
Enclosed control panel
24-volt main gas valve
Draft hood
Drain cock
Gas pressure regulator
Bronze inlet & outlet manifold
ASME 160# design pressure
Stainless steel exterior jacket

OPTIONAL EQUIPMENT

Circulating pump
Pump delay
2-Stage gas train
CSD-1 gas train
Flow switch
Thermometer
T & P dial gauge
Low water cut-off

GREEN BOILER TECHNOLOGIES

A2000 SERIES WATER BOILERS

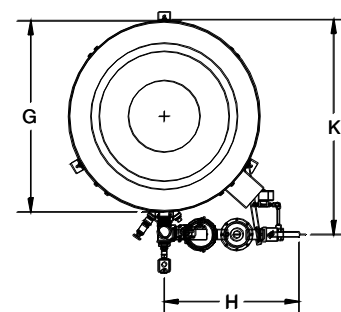
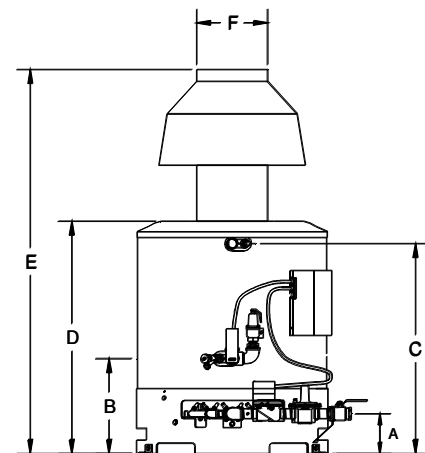
DIMENSIONS AND SPECIFICATIONS

MODEL	BTU INPUT	BTU OUTPUT	GAS CONN	WATER CONN	VENT	SHIPPING WEIGHT
A2B035	350,000	280,000	1"	1 1/2"	9"	460#
A2B050	500,000	400,000	1"	1 1/2"	10"	600#
A2B070	700,000	560,000	1 1/4"	1 1/2"	12"	650#
A2B097	970,000	776,000	1 1/4"	1 1/2"	16"	700#
A2B120	1,200,000	960,000	1 1/2"	1 1/2"	16"	804#
A2B140	1,400,000	1,120,000	1 1/2"	1 1/2"	18"	944#

MODEL	A	B	C	D	E	F	G	H	K
A2B035	7	17 1/2	34 1/2	38	58	9	24	10	29
A2B050	8	16 1/2	33	42	69	10	28	18 1/2	33
A2B070	10 1/4	13 1/4	33	38 3/4	66	12	32	25	36 1/4
A2B097	6 3/4	17 3/4	38	41 1/4	77 1/4	16	35	20	43
A2B120	7	17 1/2	44 1/2	48 1/2	84 1/2	16	35	22	43
A2B140	7	17 1/2	44 1/2	48 1/2	100 1/2	18	35	22	43

NOTES:

1. Dimensions are for units with standard gas trains.
2. For CSD-1 gas trains add 4" to dimension "H"
3. All dimensions are in inches.
4. Change the "B" to "C" for CSD-1 models



ASME Section IV, Water
Heater Code 160 PSI working
Pressure and National Board
Registered.